

**Kodak** Ngenuity  
Series Scanners



The **smartest**  
way to make  
paper **history.**

# The smartest way to scan the widest range of documents

**Kodak Ngenuity Series Scanners**—the next scanning innovation in Kodak Alaris' document imaging solutions' portfolio—deliver an unprecedented combination of intelligent paper handling, 40% larger feeder capacity than other scanners in their class and razor-sharp image quality, with the added benefits of a user-friendly interface, easy maintenance and a low cost of consumables. Users across industries can now convert a wider range of documents into high-quality digital images, quickly and more efficiently than ever before. It's an ingenious way to make, manage, and move images and information.



## Advanced document handling = improved workflow efficiency

### Hard-working for high efficiency

With daily duty cycles of up to 150,000 pages, **Ngenuity Scanners** breeze through documents up to 12.5 inches wide and 200 meters long, at speeds that are among the best in their class:

- 150 pages per minute in black-and-white, color and grayscale at 200 dpi

Further, you don't have to sacrifice long-term efficiency for short-term speed.

Some components on the scanner have been tested to last for more than 50 million scans.

### Straight pass-through paper path and document modes add versatility

While most documents can make their way easily through the scanner's rotary path, the **Ngenuity Scanners** include an alternative "straight pass through" paper path for exception documents (such as stuffed envelopes and laminated cards) that cannot make the turn on the rotary path.

What's more, special document scanning modes auto-adjust the **Ngenuity Scanners'** feeding and transport scanner settings for very long, folded or fragile documents.

### Auto-adjustable feeder tray holds 40% more documents

The **Ngenuity Scanners'** feeder tray holds 700 documents—40% more than other scanners in their class.

The tray also rises and falls—literally—in perfect sync with your batch size, thanks to Variable Feeder Tray Capacity Control, which remembers your most recent batch size. And since the feeder does not restrict you to manufacturer-set batch size limitations, you can scan almost any size batch you want, faster than ever before.

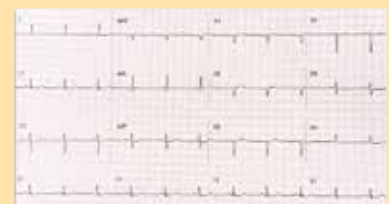
The feeder tray's capacity and innovative technology save you valuable time when loading and switching batches.

### Scan more. Sort and adjust less.

**Ngenuity Scanners** handle the widest range of documents of any scanner in their class,\* from rice paper and air bills to card stock and long EKG strips. Streamline your document workflows and maintain image quality with ease.



**Fragile and thin documents**  
Rice Paper • Airbills • NCR Forms



**Very long documents**  
EKG Strips • Oil Well Logs

\*Comparative statements are based on published specifications of certain other mid- to high-volume production scanners at the time of printing.

## State-of-the-art technologies = enhanced image quality

### Next-generation cameras deliver razor-sharp images

The **Ngenuity** Scanners can deliver 600 dpi optical capture and output.

A special enhanced accelerated 300 dpi scanning mode captures and processes images at a high resolution to improve image quality even as it increases throughput speeds.

These advanced image capture technologies result in higher OCR, ICR and barcode recognition rates and more reliable forms processing.

### Patch code detection: switch from bitonal to color and back within a batch without touching a key.

Sensors within the paper path of a **Ngenuity** Scanner will detect the presence of patch codes within a batch to automatically toggle between color scanning and black-and-white scanning. You can feed batches of mixed documents and signal the scanner to capture each page in its optimum mode automatically by inserting pre-printed sheets.

Minimal presorting and operator intervention is required to capture mixed document types. It's easy to keep the pages of entire files or dossiers together for improved document integrity

and streamlined post-scan image management.

### Onboard **VirtualReScan Professional**: image enhancement at no cost to speed

Onboard **VRS Professional** Application is integrated into the hardware of the scanner. This way, you can enjoy all the image enhancement and error resolution functionality of the **VRS** application without sacrificing speed.

Advanced color management and more precise image cropping are only two of the many features at your fingertips with Onboard **VirtualReScan Professional** Application on the **Ngenuity** Scanner.

## Added-value functionality = preferred user experience

### Easy to install, use and maintain

The **Ngenuity** Scanners feature a USB 2.0 port and cable to make it easier for you to connect the scanner to the PC. They have a SCSI port as well.

Further, our user-friendly interface with front panel functionality provides easy access to frequently used features and includes two user-customizable function buttons.

**Ngenuity** Scanners are also easy to clean and maintain. The scanners' only consumables—the rollers and tires—are easy to replace; and users can install optional accessories, like the imprinter, easily.

### Enhanced ultrasonic multi-feed detect and ignore

Three independently controlled, ultrasonic sensors raised the bar on multi-feed detection.

What's more, the "Multi-feed Ignore" setting on the **Ngenuity** Scanners now allows you to accept scanned images and continue scanning or alert the scanner in advance to accept an intended multi-feed.

The "Ignore by Size" option lets you proactively scan items—such as taped receipts and sticky notes—that the scanner might otherwise identify as a multi-feed and stop.

### Value, durability and performance

The **Ngenuity** Scanners are designed to endure the many demands of a busy production environment. A steel paper path and durable parts, such as sealed CCD cameras, long-lasting LED lights and rollers that last for 600,000 scans, help maintain uptime. And the **Ngenuity** Scanners are designed for field upgrades. As your needs change, we can add new capabilities right at your site to minimize interruptions in your schedule. All these facts add up to less scanner maintenance and a low cost of ownership.

Why wait? Ask to see a demonstration of the **Ngenuity** Scanner today.



#### Exception documents

Receipts ▪ Folded Documents  
▪ Photographs



#### Thick and stiff documents

Stuffed Envelopes ▪ Plastic Cards  
▪ Cardstock



#### Legal and A4 size documents

Contracts ▪ Forms ▪ Invoices

# Kodak Ngenuity Series Scanners

Model		9150	9125	9090
Scanning Speed	Letter Size Landscape at 200 dpi	150 ppm/300 ipm	125 ppm/250 ipm	90 ppm/180 ipm
	Black-and-White, Color, Grayscale Simplex/Duplex Portrait at 200 dpi	120 ppm/240 ipm	100 ppm/200 ipm	70 ppm/140 ipm
Daily Duty Cycle		150,000	125,000	90,000
Roller Life (bond)		600,000 scans		
Resolution		Output: 600 dpi, Optical: 600 dpi		
Camera Technology		SharpShooter Trilinear 7.6k CCD		
Lighting Technology		White LEDs—instant warm-up; designed to last the life of the scanner with normal use		
Image Enhancement		Onboard <b>VRS</b> Professional		
Interface		USB 2.0, USB 3.0 compatible; SCSI III		
Supported Drivers (Included)		ImageControls, ISIS and TWAIN through <b>VRS</b> Professional; direct ISIS, TWAIN		
Multi-feed Detection		Ultrasonic Multi-feed featuring: Three sensors, Preemptive Ignore, Ignore As Is, Ignore by Size		
Imprinting		Optional user-installable pre- and/or post-scan imprinter, time and date stamping, 72 characters		
Document Size		43 x 64 mm (1.7 x 2.5 in.) to 318 x 1016 mm (12.5 x 40 in.)		
Document Size—Long Document Mode		Up to 200 m (219 yards)		
Maximum Image Width		311 mm (12.25 in.)		
Paper Thickness—Rotary		0.038-0.89 mm (.0015-.035 in.)		
Paper Thickness—Straight-Through Paper Path		0.038-1.78 mm (.0015-.070 in.)		
Paper Weight		30-1,200 gsm (7 to 320 lb. bond)		
Feeder Capacity (80 g/m <sup>2</sup> paper/20 lb. bond)		700 documents—Variable Feeder Tray Capacity Control		
Scanner Size (HxWxD)**		49.5 x 52.1 x 76.2 cm (19.5 x 20.5 x 30 in.)		
Scanner Weight		50.8 kg (112 lb.)		
Power Requirement		AC 100-120 V; 220-240 V; 50/60 Hz		
Power Consumption	Maximum (Scanning)	175 W		
	Minimum (Standby)	60 W		
	Sleep	6.7 W		
Environment	Temperature	10°C to 38°C (50°F to 100°F)		
	Relative Humidity	10% to 80%		
Additional Features		Straight Pass Through Paper Path, Straight-Through Paper Path Tray Adapter, Special Documents Mode, Advanced Color Functionality		
Additional Contents		USB Cable, Installation Resource CD with <b>Kodak Ngenuity</b> Operator Utility (NOU) and the <b>VRS</b> Professional Application, Power Cord, Starter Cleaning Kit, Camera Calibration Kit		
Additional Options		User-installable Pre- and/or Post-scan Imprinter with Time and Date Stamping, Roller Kit, Cleaning Kit, Power Conditioner, Supported by <b>Kodak</b> Capture Pro Software		

\*\*Straight paper path door closed

Kodak Alaris' Document Imaging solutions enable customers to capture and consolidate data from digital and paper sources, understand and extract valuable insight from the contents, and deliver the right information to the right people at the right time. Our offerings include award-winning scanners, capture and information management software, an expanding range of professional services and industry-leading service and support. With customers ranging from small offices to global operations, Kodak Alaris delivers superior systems and solutions to automate business processes, enhance customer interactions and enable better business decisions.

## To learn more:

Visit [www.kodakalaris.com/go/docimaging](http://www.kodakalaris.com/go/docimaging)

### Kodak Alaris Inc.

2400 Mt. Read Blvd., Rochester, NY 14615 1-800-944-6171

### Kodak Alaris Operations Canada Inc.

Mississauga, Ontario, Canada L5R 1B9 1-800-944-6171

TM/MC/MR: Ngenuity

© 2014 Kodak Alaris Inc. Kodak Alaris will be the Company's trade name for its global business.

The Kodak trademark and trade dress are used under license from Eastman Kodak Company.

Specifications are subject to change without notice.

A-5815 CAT No. 830 9452 2/14

**Kodak** alaris